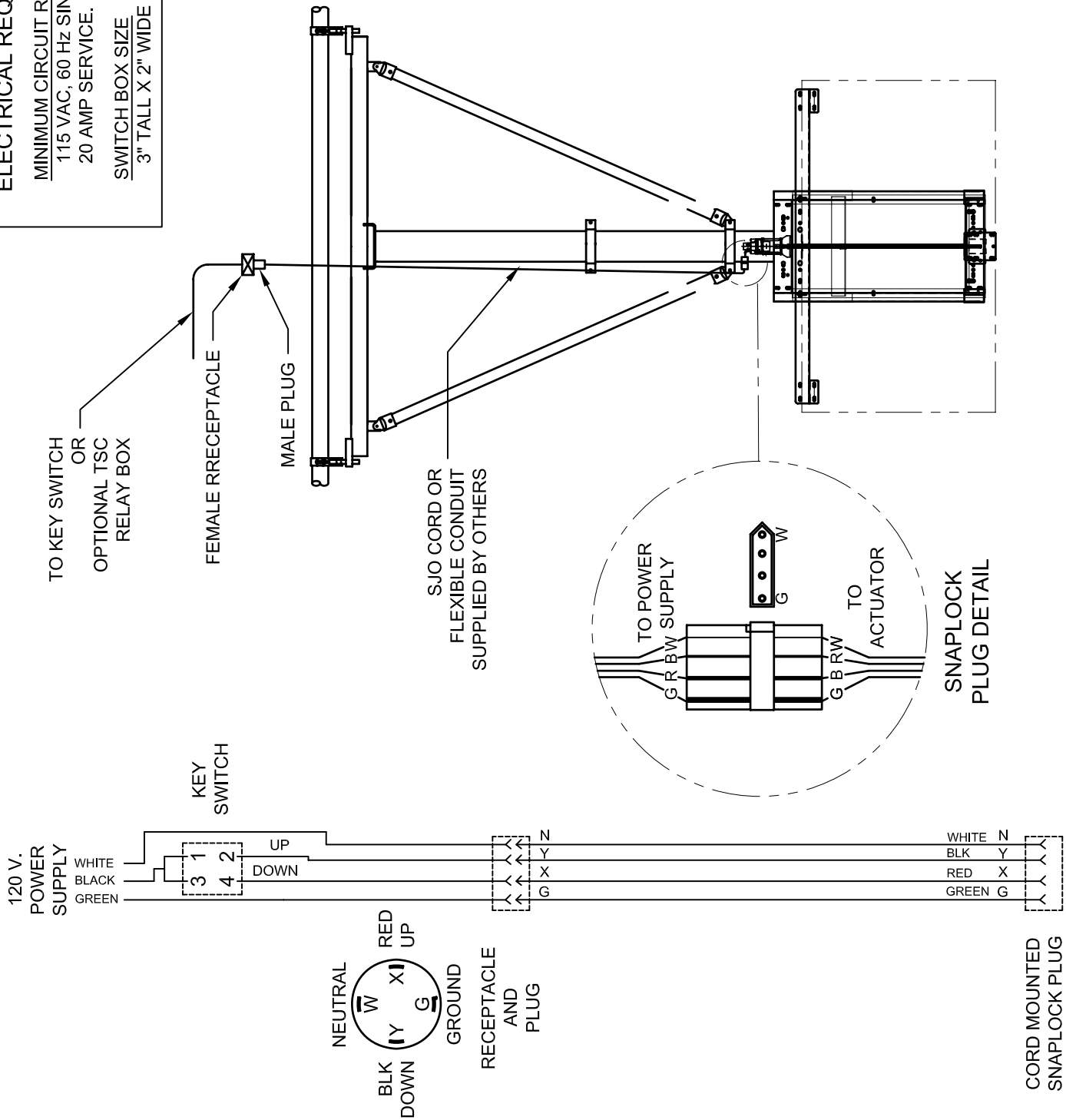


ELECTRICAL REQUIREMENTS
MINIMUM CIRCUIT REQUIREMENTS
 115 VAC, 60 Hz SINGLE PHASE,
 20 AMP SERVICE.
SWITCH BOX SIZE
 3" TALL X 2" WIDE X 2-3/4" DEEP



WIRING DIAGRAM

REVISION		
REV.	DATE	BY
A	01/28/04	JJC
B	03/18/04	JJC
C	01/16/07	JJC
D	04/15/08	RWP
E	06/23/08	DWP




Gared Holdings, LLC
 9200 E. 146th St. Noblesville, IN 46060

THIS DOCUMENT CONTAINS TRADE SECRET AND OTHER MATERIALS WHICH ARE PROTECTED BY CONFIDENTIALITY NOTICE AND AGREEMENT AND BY COPYRIGHT. ANY USE OR COPYING OF THIS DOCUMENT EXCEPT AS AUTHORIZED BY GARED HOLDINGS, LLC IS STRICTLY PROHIBITED.

ADJUST-A-GOAL ELECTRICAL SCHEMATIC

DRAWN	CONNERLEY	DATE	04/18/03	MATERIAL	N/A
APPROVED	JJC	DATE	04/18/03	FINISH	N/A
FILE LOC. Q:\Final Release\Specifications				DWG. NO.	1158
SIZE	SCALE	SHT. NO.	PART NO.	1158	
A	NONE	1 OF 1			
					REV E



MODEL 1158

HARD WIRE KIT FOR ELECTRIC HEIGHT ADJUSTER

APPLICATION

This kit is designed to provide key switch operation for the model 1170 series direct mount electric adjust-a-goal.

MATERIAL

Kit consists on one cord mounted snap-lock male plug, one box mounted female twist-lock receptacle with cover, one cord mounted male twist-lock plug and one momentary contact three position switch mounted on stainless steel cover.

All conduit, wiring, junction boxes and other components not listed above shall be supplied by electrical contractor.